



# Joson-Care 2024

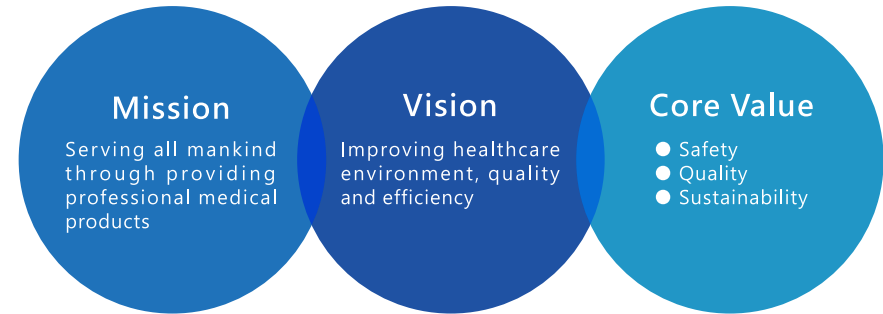


Safety Quality Sustainability





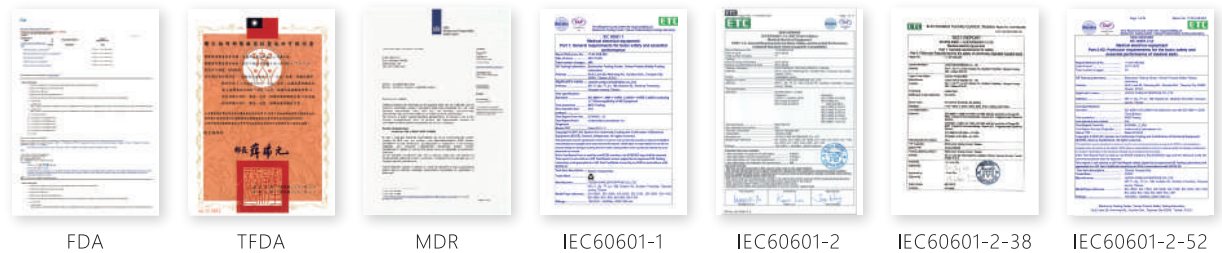
Business  
Concept

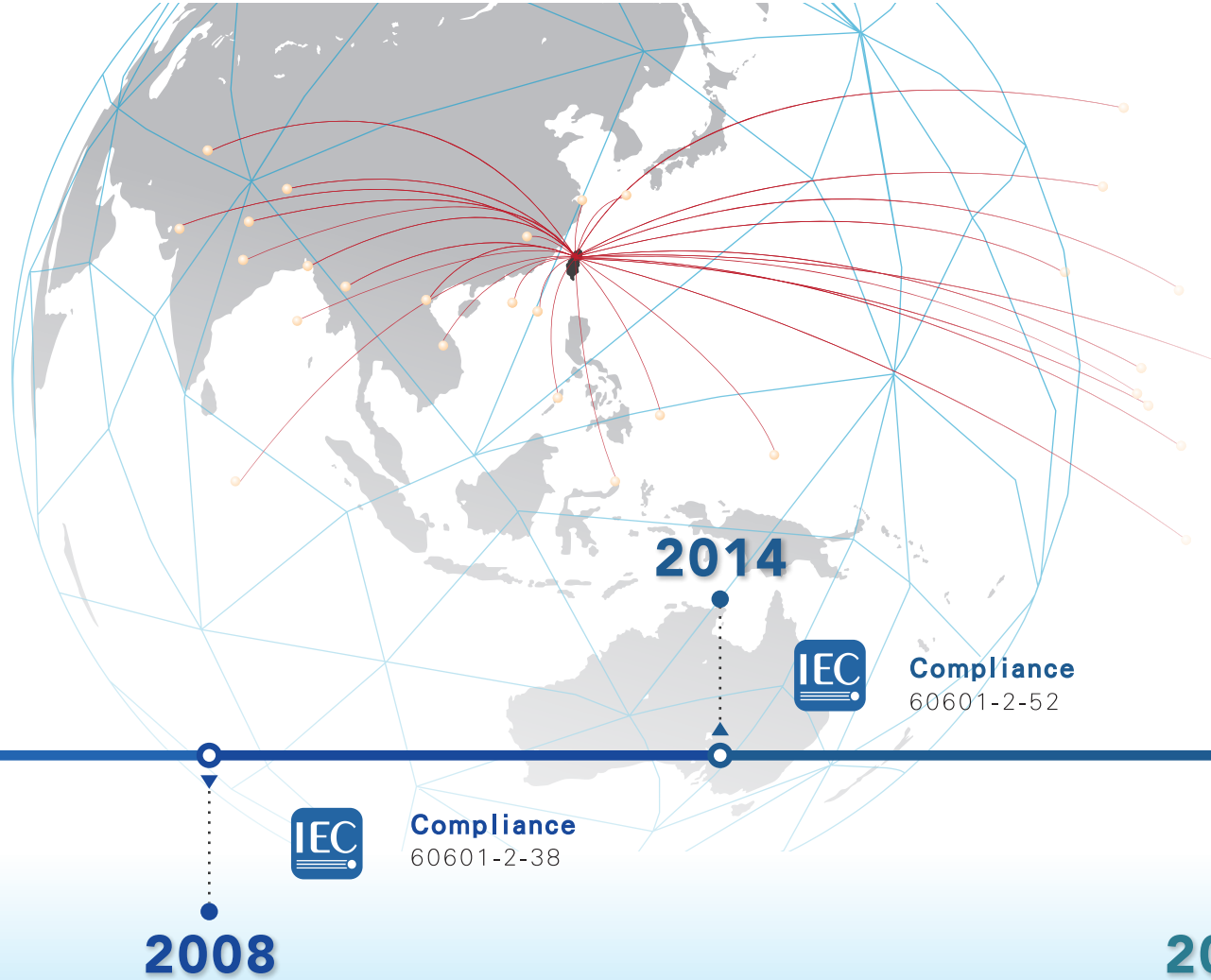


History



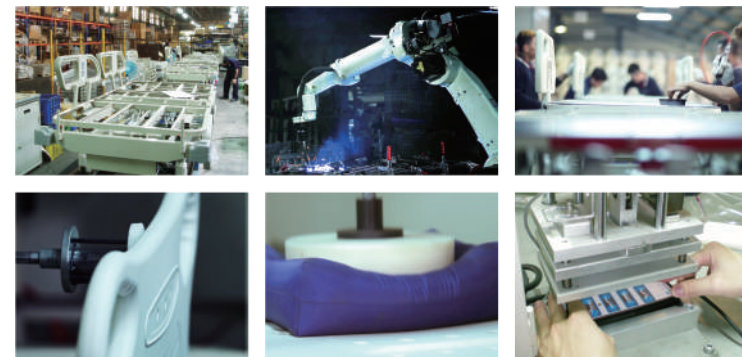
Established in 2000, Joson-Care Co., Ltd. is Taiwan's premier manufacturer of hospital beds and ward equipment. We uphold rigorous quality control standards to deliver exceptional accuracy, durability, and reliability, while maximizing the use of renewable resources.





So far, we have sold our products to more than 40 countries. Such as U.S.A, Japan, France, South Korea, India, Iran, Panama, Thailand, Turkey and U.A.E.

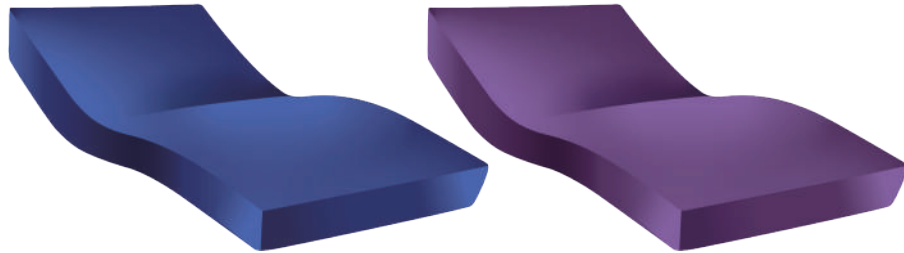
Joson-Care's manufacturing system is meticulously designed to adhere to ISO 13485 and Quality Management System (QMS) standards. This rigorous approach ensures that our processes consistently deliver high-quality products, precisely meeting and often exceeding customer expectations for safety, performance, and reliability.



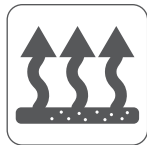
# Mattress

JS-301, JS-302, JS-303

Mattress cover: Nylon



■ BS



Ventilation



Waterproof

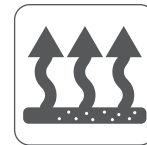


Flame Retardant



Anti Bacterial

■ CA



Ventilation

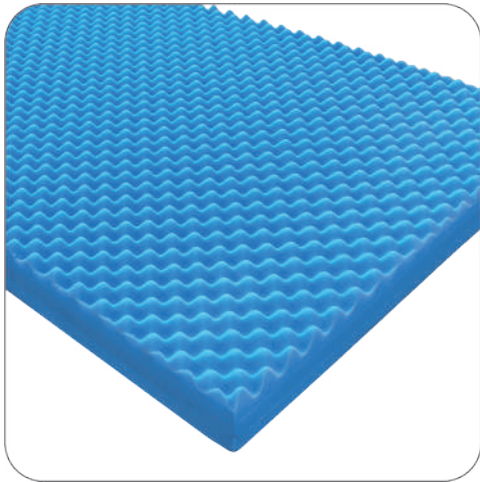


Waterproof

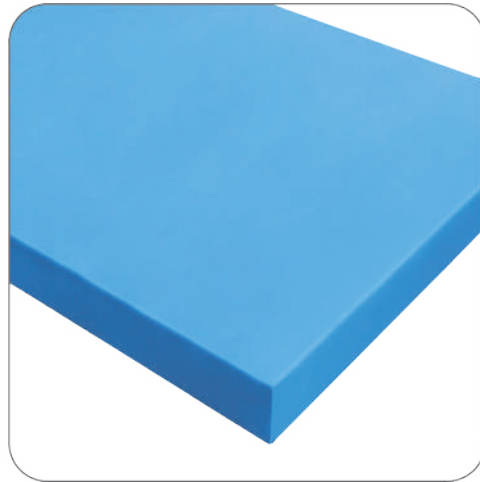


Flame Retardant

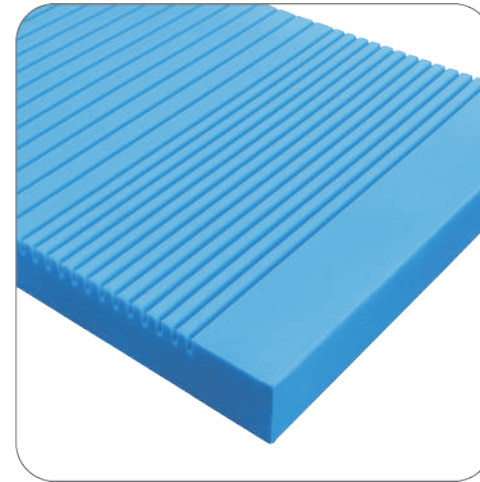
High-Density Foam



JS-301



JS-302



JS-303

Specification	JS-301		JS-302		JS-303	
Model	JS-301BS	JS-301CA	JS-302BS	JS-302CA	JS-303BS	JS-303CA
Mattress cover	■	■	■	■	■	■
Fire safety standard	BS-7177	CA-117	BS-7177	CA-117	BS-7177	CA-117
Anti-bacterial	✓		✓		✓	

## JT-100

### Orthopedic Traction Frame



Triangle Ring Set



Pulley Mounting Set



Foot Support Unit



Support Rod Set



1. The traction frame is suitable for all series of Joson-Care's bed and installed in four IV Pole holder.
2. The bottom of the frame is made by solid stainless steel bars.
3. Switching the wrench could quickly adjust the frame, it's tools free to set the frame.
4. The traction frame includes one set of triangular ring and pulley.
5. The octagonal pipes are made of aluminum.
6. Two sets of reinforcing units are helping to reinforce the traction frame.
7. Adjustable height and length of triangle ring set can avoid patient being impacted while position changed.

# IV Stand



JR-016 IV Stand

Size : H1630~2300mm  
Frame : Stainless 304#



JR-018 Stackable IV Stand

Size : 1335~2169mm  
Frame : Chrome Plated steel



K5000-MS 2 Claws IV Pole

Size : 855~1510mm  
Frame : Chrome Plated steel



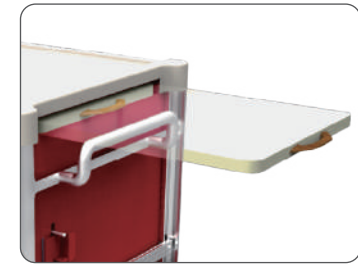
K4000-MS 4 Claws IV Pole

Size : 1020~1760mm  
Frame : Chrome Plated steel

# JA-107

## Emergency Cart

Overall Size : L735 x W560 x H990mm  
 Table Surface Size : 380 x 817 mm  
 Drawers size : 60 x 9 x 15 : ±1 cm



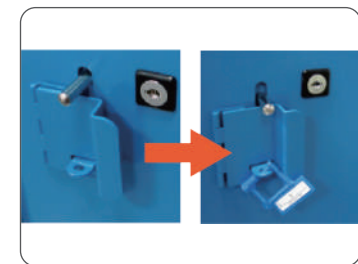
Laptop Drawer  
 ( 390 x 380mm )



Trash Bin(9 liters)  
 ( W277 x H182 x D390mm )



Cardiac Board  
 ( L700 x W400 x D15mm )



Disposable Lock

- Frame: Steel
- Cover: ABS
- A buckle fixed design which prevent drawers sliding out.
- Key and disposable lock available.
- Vertical and horizontal divider included.
- Flexible confuguration design.
- 2 sets divider quipe in both 3" and 6" drawers.



## Accessories Option



Storage Box  
( W600 x H304 x D124mm )



IV Pole  
( 1020~1760mm )



Suction Tube Holder  
( W90 x H480 x D90mm )



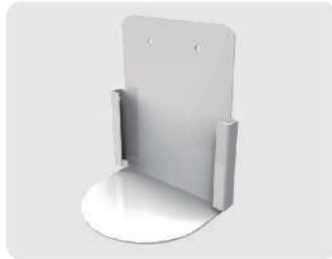
Oxygen Tank Holder  
( W125 x H370 x D175mm )



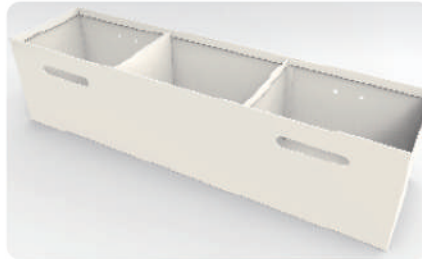
Pedal Trashbin(30 liters)  
( W311 x H406 x D500mm )



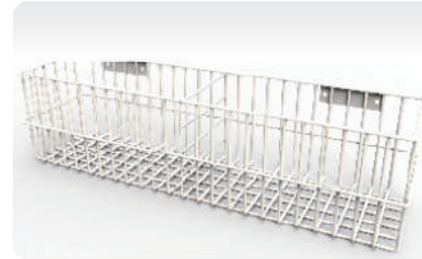
Hand Sanitizer Holder  
(Including hand sanitizer bottle)  
( W75 x H105 x D77mm )



Syringe Collection Box Holder  
( W130 x H150 x D90mm )



Plastic Bin Holder  
( W480 x H120 x D120mm )



Smesh Bin Holder  
( W488 x H125 x D125mm )



Glove Dispenser

## UD Medical Cart



## Medical Cart



**JO-103 Mayo Table**

Size : L485 x W325 x H800~1200mm  
Frame : Stainless 304#



**JA-108 Dressing Trolley**

Size : L600 x W450 x H850mm  
Frame : Stainless 304#

**JA-111 Utility Cart**

Size : L600 x W450 x H850mm  
Frame : Stainless 304#



## JF-014

### Bedside Cabinet



Size : L460 x W460 x H860mm  
 Color : Blue / Pink  
 Material: ABS

### Outpatient Equipment



#### JR-017 Screen

Size : W750 x H1800mm  
 Frame : Stainless 304#  
 Cloth : 65% tricot & 35% rayon

#### JO-104 Pedal

Single Size : L400 x W300 x H250mm  
 Double Size : L400 x W600 x H440mm  
 Frame : Stainless 304#  
 Surface : Anti-slip Plastic Board



## Overbed Table

### JR-032 Overbed Table

Size : L817 x W430 x H820~1225mm  
 Frame : Powder coated steel  
 Table Surface : flame-retardant laminate  
 Max. Loading : 20KG



Gas spring driven design



2" lockable castor\*4  
 2 with brake



### JR-011 Overbed Table

Size : L765 x W385 x H720~1120mm  
 Frame : Powder coated steel  
 Table Surface : flame-retardant laminate

### JR-051 Overbed Table

Size : L845 x W400 x H780~1050mm  
 Package : L880 x W465 x H165mm  
 Frame : Powder coated steel  
 Table Surface : flame-retardant laminate  
 Max. Loading : 20KG



### Y0307-SY Overbed Table

Size : L890~1060 x W320 x H30mm  
 Frame : ABS plastic  
 Tube : Aluminum  
 Hooks on the backside.

## Doctor Chair



**JO-107 Doctor Chair**

Size : Ø380mm · H510~660mm  
 Seat: PU Foam  
 Frame: Aluminum



**JO-109 Doctor Chair**

Size : Ø300mm · H500~670mm  
 Frame : Stainless 304#



**JO-108 Doctor Chair**

Size : Ø380mm · H510~660mm  
 Seat: PU Foam  
 Frame: Aluminum

## Caregiver Recliner



**JD-010 Caregiver Recliner**

Size : 600 x 800 x 950mm  
 600 x 1850mm (Extended)

Frame : Stainless 304#  
 Cushion : High density foam  
 Cover : Synthetic Leather





### Joson-Care Enterprise Co., Ltd.

No.11, Aly. 77, Ln. 180, Hushan St., Guishan Dist., Taoyuan City 333024, Taiwan

☎ +886-3-329-0925

✉ overseas@joson-care.com.tw

🌐 www.joson-care.com

#### Taichung Office

1F., No. 280, Chengdu Rd., Xitun Dist.,  
Taichung City 407403, Taiwan

TEL : +886-4-2316-0743

#### Tainan Office

No. 732, Sec. 1, Zhongzheng Rd., Rende Dist.,  
Tainan City 717010, Taiwan

TEL : +886-6-266-2809



Document No.: JCQB-031  
Release Date: 2024.06.01  
Version: L